



**SOUNDARYA**  
INSTITUTE OF  
MANAGEMENT AND  
SCIENCE



## CRITERION - 7

# INSTITUTIONAL VALUES AND BEST PRACTICES

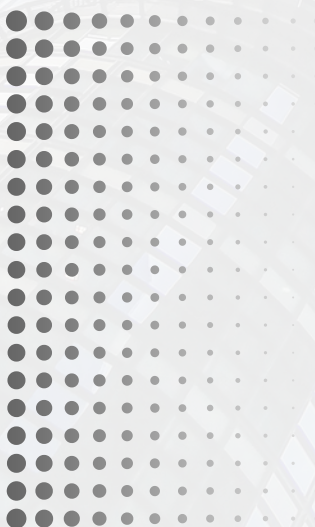
## 7.1 - Institutional Values and Social Responsibilities

“

7.1.1

Institution has initiated the Gender Audit and measures for the promotion of gender equity during the last five years.

---



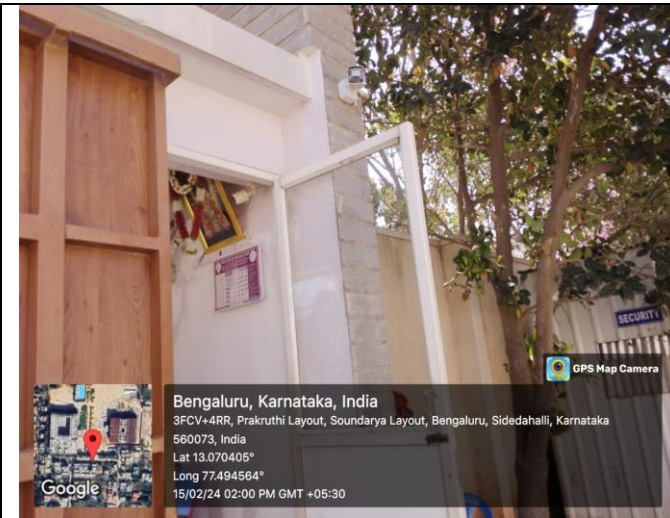


# Soundarya Institute of Management and Science

Soundarya Nagar Sidedahalli Nagasandra post Bangalore-560073  
Affiliated to Bangalore University

## GENDER SENSITIZATION

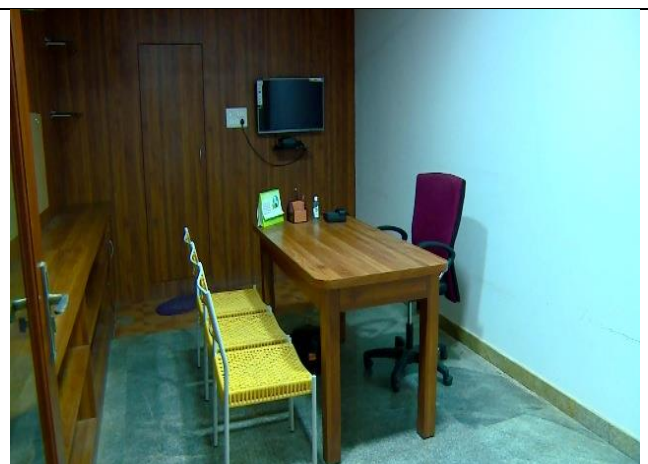
### Safety & Security



# Sanitary & Health



# Counseling Room & Common Room



# Day care centre



(Day Care Playground & Pantry facility for women fraternity children)

